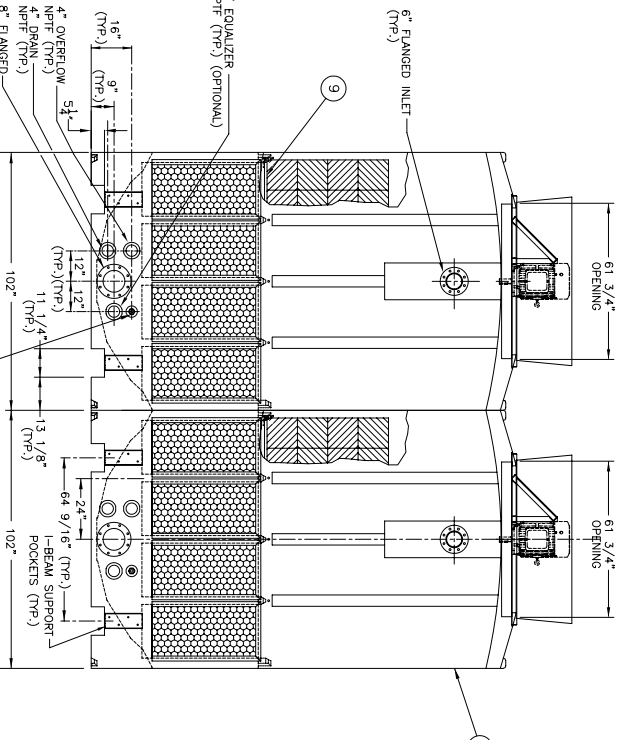
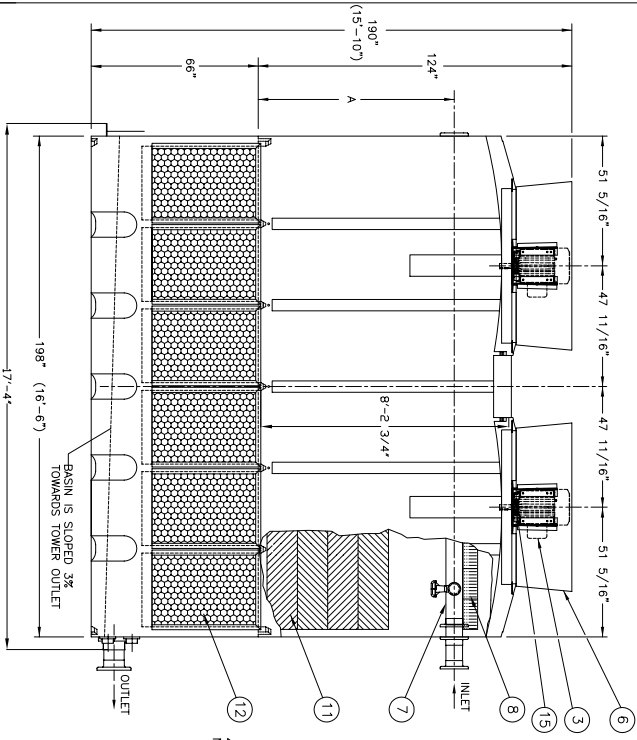


MODEL SERIES	DM 7A
TM2XX3XX	68"
TM2XX4XX	77 1/2"

DATE	SW	REVISION	APPROV
2/28/02	A	REV. INLET & POCKETS	BLD. JF
4/9/02	B	REV. ANCHOR LUG DETAILS	BLD. JF
1/28/03	C	ADD PROP. RECOVERY STACK	GT. JF
10/7/03	E	ADJUST WEIGHTS	GT. JF
8/29/05	F	ADD DIM. ELEVATION TABLE	KT. JF
9/19/06	G	MOD. MAKE-UP ANCHOR LUGS	KT. JF
1/28/08	H	ADD SLOPED SLUMP NOTE	KT. JSH
2/27/08	I	ADD SLOPED SLUMP NOTE	KT. JSH
4/14/09	K	REVISED HEIGHT	KT. JSH

NOTES:

- DIMENSIONS SHOWN ARE NOMINAL AND ARE SUBJECT TO FABRICATION TOLERANCES.
- EXTERNAL PIPING MUST BE INDEPENDENTLY SUPPORTED.
- PIPING AND BULKHEAD FITTING MATERIAL IS PVC.
- HARDWARE MATERIAL IS TYPE 304 STAINLESS STEEL.
- FAN ASSEMBLY SHIPPED INSTALLED ON TOWER.
- MAXIMUM INLET WATER TEMPERATURE 140°F.
- (CONSULT FACTORY FOR HIGHER TEMP. APPLICATIONS.)
- ALL DIMENSIONS ARE IN INCHES.
- ALL WEIGHTS ARE IN POUNDS. DRY WT. INCLUDES: FAN ASSEMBLY AND TOWER COMPLETE.
- OPERATING WT. INCLUDES A FULL SLUMP.
- TOWERS TO BE INSTALLED ON I-BEAMS w/ 7" MINIMUM TOP WIDTH IN POCKETS SHOWN OR A FLAT AND RIGID SURFACE. PROPERLY SUPPORTED.

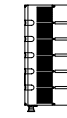


TOTAL HP	SEE MODEL
DRY WT.	13,200 LBS.
OPER. WT. SLUMP FULL	24,600 LBS.
OPERATING WT. BOTTOM OUTLET	17,100 LBS.
SLUMP CAP	960 GALLONS

INFORMATION CONTAINED HEREIN IS SUBJECT TO CHANGE WITHOUT NOTICE IN THE INTEREST OF PRODUCT IMPROVEMENT.

ITEM	QTY	DESCRIPTION	MATERIAL	REMARKS
17	1	LOGTIE BREAKER (NOT SHOWN)	POLYETHYLENE	
16	8	ANCHOR LUGS	STEEL	DT-A-87-026
15	4	VIBRATION SWITCH	STEEL	OPTIONAL
14	1	FLOAT VALVE	BRONZE	
13	1	LADDER ASSEMBLY (NOT SHOWN)	ALUMINUM	OPTIONAL
12	28	LOUVER PANEL	POLYETHYLENE	
11	2	SETS FILL	PVC	
10	2	STRAINER (NOT SHOWN)	PLASTIC	OPTIONAL
9	2	FILL SUPPORT	FRP	
8	2	SETS MIST ELIMINATOR	PVC	
7	2	WATER DISTRIBUTION	PVC	
6	4	VELOCITY RECOVERY STACK	POLYETHYLENE	WITH SCREEN
5	4	PROPELLER	FRP/POLYPROP	
4	4	ELECTRICAL CONN.	ALUMINUM	
3	4	MOTOR	ALUM./STEEL	TEAO, 900 RPM
2	4	FAN RING	COATED STEEL	
1	2	TOWER SHELL	POLYETHYLENE	

DELTA COOLING TOWERS, INC.
 41 PINE STREET, ROCKAWAY, NJ 07866
 PH 973.586.2201 FAX 973.586.2243
2 CELL (10 & 15 H.P.)



TM SERIES™
 SCALE 1/2"=1'-0"
 DATE 6/12/01
 DWG NO. DT-D-87-903
 APPROV BY: Dennis J. O'Leary
 DRAWN BY: Dennis J. O'Leary